



HEART HEALTHY HOODS



¿Influye el código postal en la dieta?

Entornos alimentarios y desigualdades



Manuel Franco MD, PhD

Associate Professor

School of Medicine, University of Alcalá, Spain

Adjunct Associate Professor

Department of Epidemiology

Johns Hopkins Bloomberg School of Public Health, Baltimore



Entorno urbano y alimentación: Heart Healthy Hoods en Madrid



1. Pensemos en nuestras ciudades
2. Sistemas alimentarios y entorno urbano
3. Proyecto ERC **Heart Healthy Hoods**: Entorno alimentario en Madrid, dieta y salud cardiovascular
4. **Photovoice Villaverde**: Un proyecto participativo sobre el entorno alimentario y la dieta



Primero, unas preguntas



- Piensen en el lugar, barrio en el que viven
- Piensen en las oportunidades que tienen para mantener una dieta saludable donde viven.
- Piensen sobre cómo nos comportamos, con respecto a la dieta, todos los que vivimos alrededor de ustedes.



Barrios y alimentación en Madrid, estudio HHH



María, 45 ys, resident of Villaverde. Low-income area.

María and her friends meet twice per week to have a dinner snack at the Dehesa Boyal park, a pinewood and main park in San Cristobal. María lives in Spain for the last 4 years, unemployed for the last 8 months, and she often thinks about coming back to the Dominican Republic where her family lives.



Barrios y alimentación en Madrid, estudio HHH



Bar in las Ventas. Middle-income area.
This bar, decorated with bull fighting paraphernalia, is a prototypical bar in Madrid; well attended and serving people every age. Madrid residents love to spend time in bars where they can chat, drink and eat with friends and family. “I can cross Madrid with my friends for good bars with great food and beer. In this bar you get an incredible short beer with a great snack for 1,20€ !”



Barrios y alimentación en Madrid, estudio HHH



Fruit and vegetables store in the Salamanca area. High-income area

Hilario, the owner, takes great pride; “We aim for the best client relationship. We know most of them by name, we bring only best quality produce, air conditioning, best freezers...” Prices in this store can be up to 4 times higher than in a low-income area.



Oportunidades de la Investigación en Salud Urbana



1. En 2050: 66% de la población vivirá en ciudades.
2. Retos en salud: cronicidad y sus factores de riesgo.
3. Factores como: pobreza, desempleo, condiciones de trabajo.
4. Desigualdades y segregación.
5. Ciudad: oportunidad para mejorar la salud de millones.

(Franco, Bilal and Diez-Roux, Journal Epidemiol Comm Health 2015)

6. Investigación interdisciplinar y con métodos nuevos
7. **Generar evidencias y actuar**

VERDURA



MADRID



XXXXX

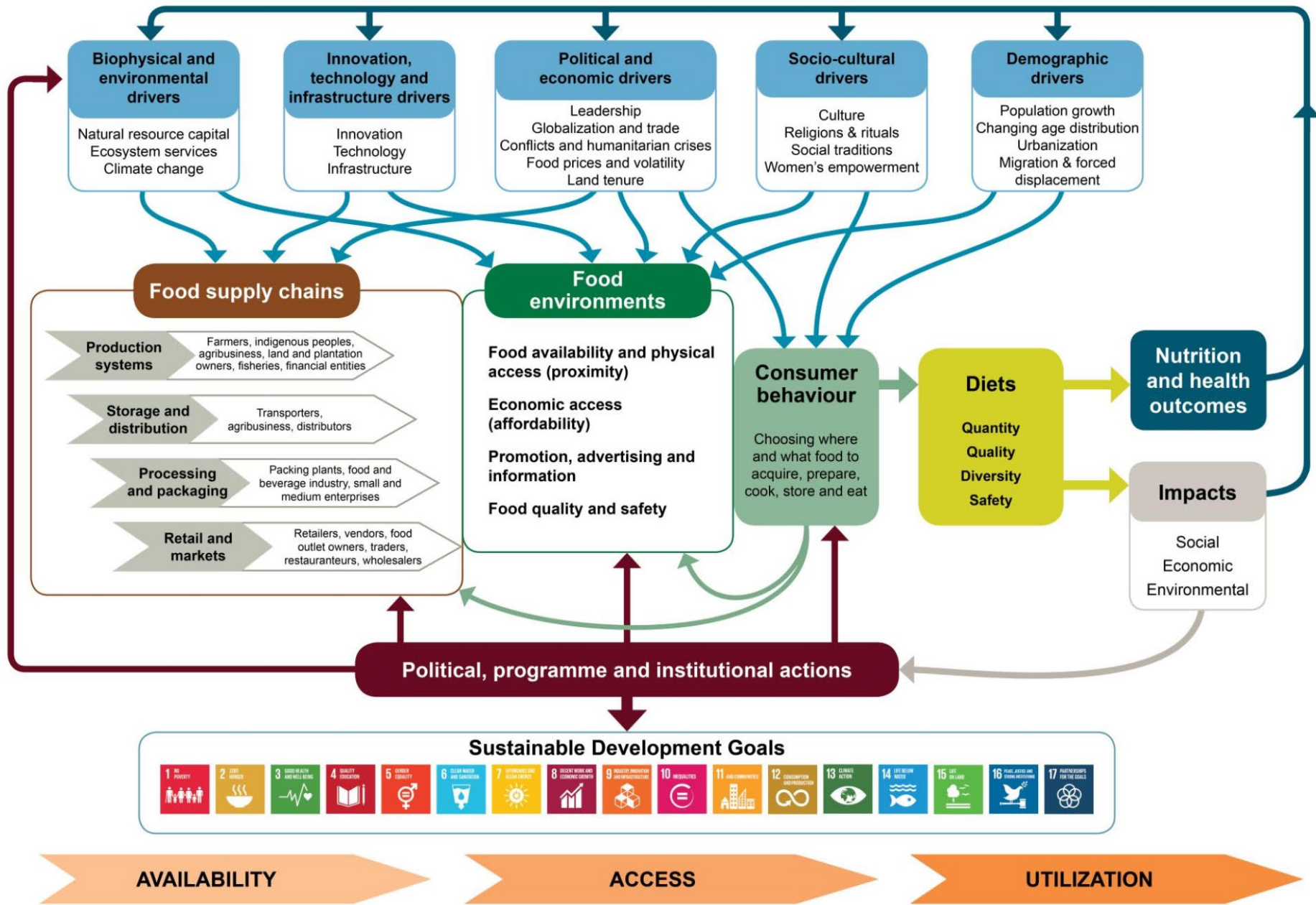


in relation to Mediterranean diet

Food systems refer to the elements and activities related to the production, processing, distribution, preparation and consumption of food. Also refers to its related health, economic and environmental outcomes.

- Interest in the EU: Harnessing R&I for FOOD 2030
- Interest in the US: Center for a Livable Future Hopkins, UCDAVIS Sustainable Agriculture and Food Systems
- Interest at FAO's Committee on World Food Security

Figure 1 Conceptual framework of food systems for diets and nutrition





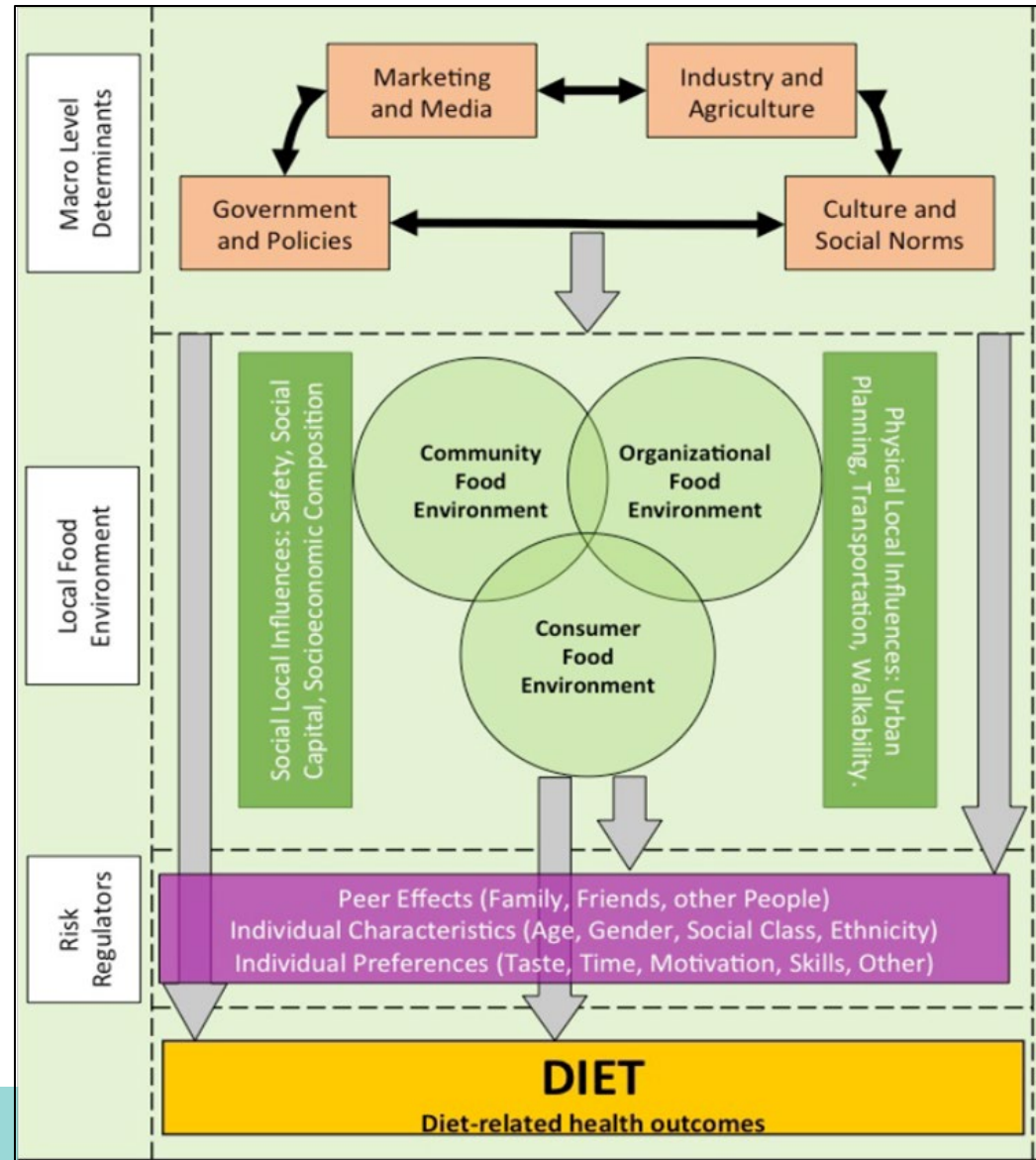
Local food environment



- Places where we buy food influence food choices, making food environments an example of a mass influence on population diets

- Conceptual framework from:

Franco M., Bilal U., Díez J. (2016). Food Environment. In The Encyclopedia of Food and Health. B. Caballero, Finglas, P., and Toldrá, F. (Eds) Academic Press, Oxford: 3: 22-26





1. Starting Grant Consejo Europeo Investigación
2. Interdisciplinaridad
3. Métodos Mixtos
4. Participación ciudadana: Metodología Fotovoz
5. Acción: Comunicación y traslación a políticas



HEART HEALTHY HOODS



Social and Physical Urban Environment and CV Health: The Much Needed Population Approach



Manuel Franco MD, PhD

Starting Grant 2013

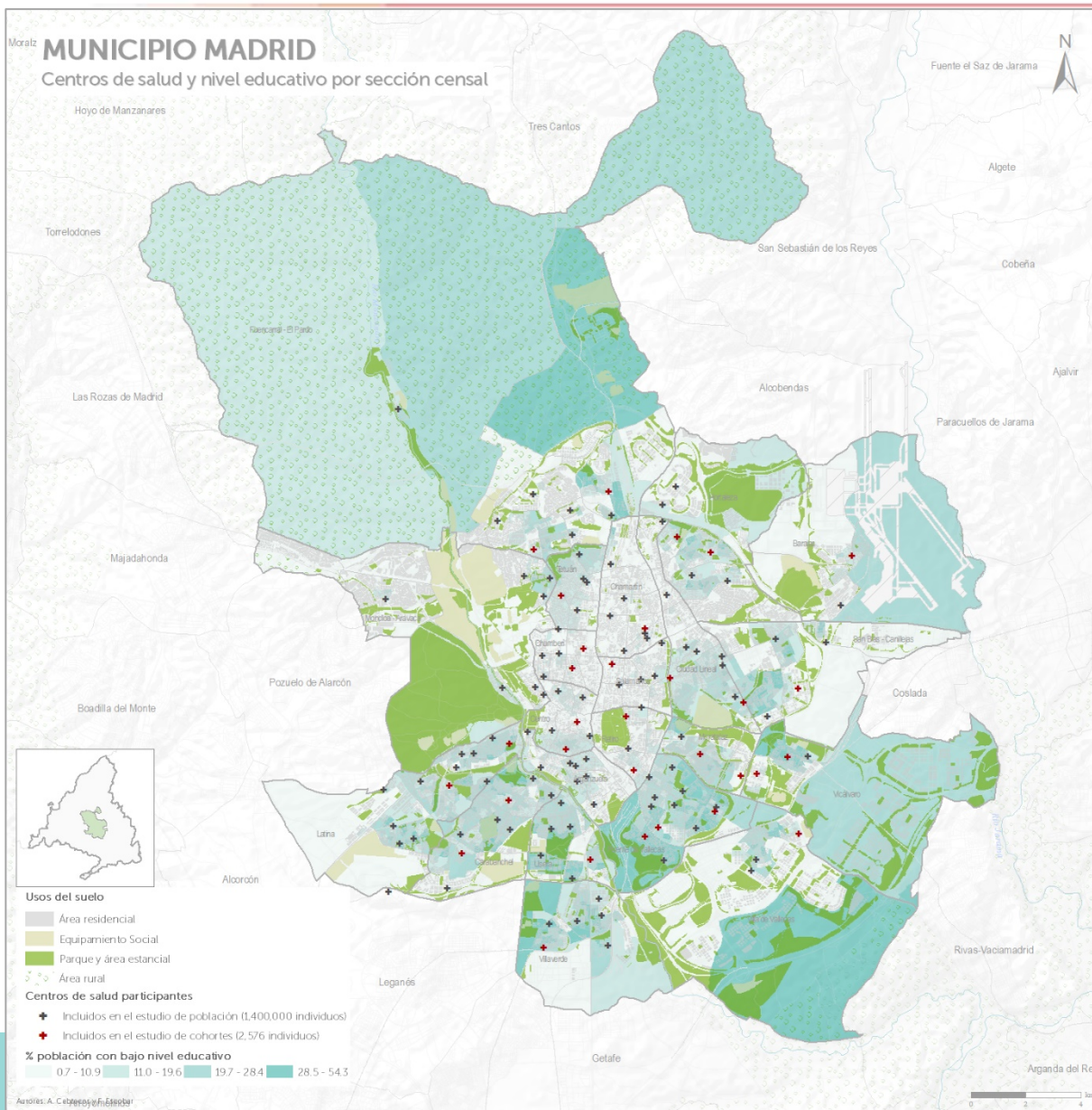
Start Date April 1st 2014

ERC Starting Grants

FUNDING	1.5 million € for 5 years
OBJECTIVE	To encourage independent careers of excellent investigators providing enough support in the critical moment (starting to develop their own team).
ELEGIBILITY	PI must have a PhD degree in the last 2 to 7 years. <u>Available to non-EU researchers.</u>
REQUISITES	At least one relevant publication without his/her thesis advisor At least 50% effort
PROFILE	High potential, project with potential social Impact in Europe.



MADRID CITY



21 Districts
128 Neighborhoods
2.412 Census Sections
(≈ 1.500 ps)
3,2 Mill. Residents

HHH will analyze the
Integrated Primary Care
Health System Electronic
Health Records Database of
1,4 mill. residents 40-75 ys.

**One clearly identified
policy maker**



Interdisciplinary team

PI: Social Epidemiology



Geography

University of Alcalá
CRESH Edinburgh
LSHTM

Health Sociology

University of Salamanca
Johns Hopkins School of Public Health

Primary Care System

Primary Care Research Unit, Madrid

Epidemiology

University of Alcalá
Johns Hopkins School of Public Health

Photography
Knowledge
Dissemination
Citizen Science



HHH Kick off meeting Sept. 2014

Equipo Interdisciplinar





HHH Food research (Julia Diez)



- Mediterranean food environment (EJCN accepted)
- Validation of municipal data to characterize the **retail food environment** in the whole city of Madrid (Under review)
- Madrid Baltimore; Urban food environment cross-city differences (Preventive Med. 2016, Diez J et al.)





Madrid Baltimore



Urban food environment cross-city differences



Contents lists available at [ScienceDirect](#)

Preventive Medicine

journal homepage: www.elsevier.com/locate/ypmed



Understanding differences in the local food environment across countries: A case study in Madrid (Spain) and Baltimore (USA)



Julia Díez ^a, Usama Bilal ^{a,b}, Alba Cebrecos ^a, Amanda Buczynski ^c, Robert S. Lawrence ^c, Thomas Glass ^b, Francisco Escobar ^a, Joel Gittelsohn ^d, Manuel Franco ^{a,b,*}

^a Social and Cardiovascular Epidemiology Research Group, School of Medicine, University of Alcalá, Alcalá de Henares, Madrid, Spain

^b Department of Epidemiology, Johns Hopkins Bloomberg School of Public Health, Baltimore, MD, United States

^c Center for a Livable Future, Johns Hopkins Bloomberg School of Public Health, Baltimore, MD, United States

^d Global Obesity Prevention Center at Johns Hopkins, Department of International Health, Johns Hopkins Bloomberg School of Public Health, Baltimore, MD, United States



Walking access to healthy food



MADRID

BALTIMORE



- 200 m (0.124 mi)
- 400 m (0.249 mi)
- 800 m (0.497 mi)

- ☆ Corner
- ▲ Grocery
- ◇ Supermarket

CATCHMENT AREA (m)	SURFACE COVERED BY Q3 STORES (%)		PEOPLE COVERED BY Q3 STORES (%)	
	MADRID	BALTIMORE	MADRID	BALTIMORE
< 200	79	1	77	1
200 - 400	21	3	23	4
400 - 800	0	13	0	13
>800	0	83	0	82



Conclusions

Research

Cross-cities comparisons are needed to understand urban food environments and promote healthy diets

Relying exclusively on supermarkets underestimates healthy food availability in Mediterranean cities

Policy

Supporting more compact and diverse urban environments





Desigualdades en el entorno alimentario de centros educativos en Madrid





Desigualdades en el entorno alimentario de centros educativos en Madrid

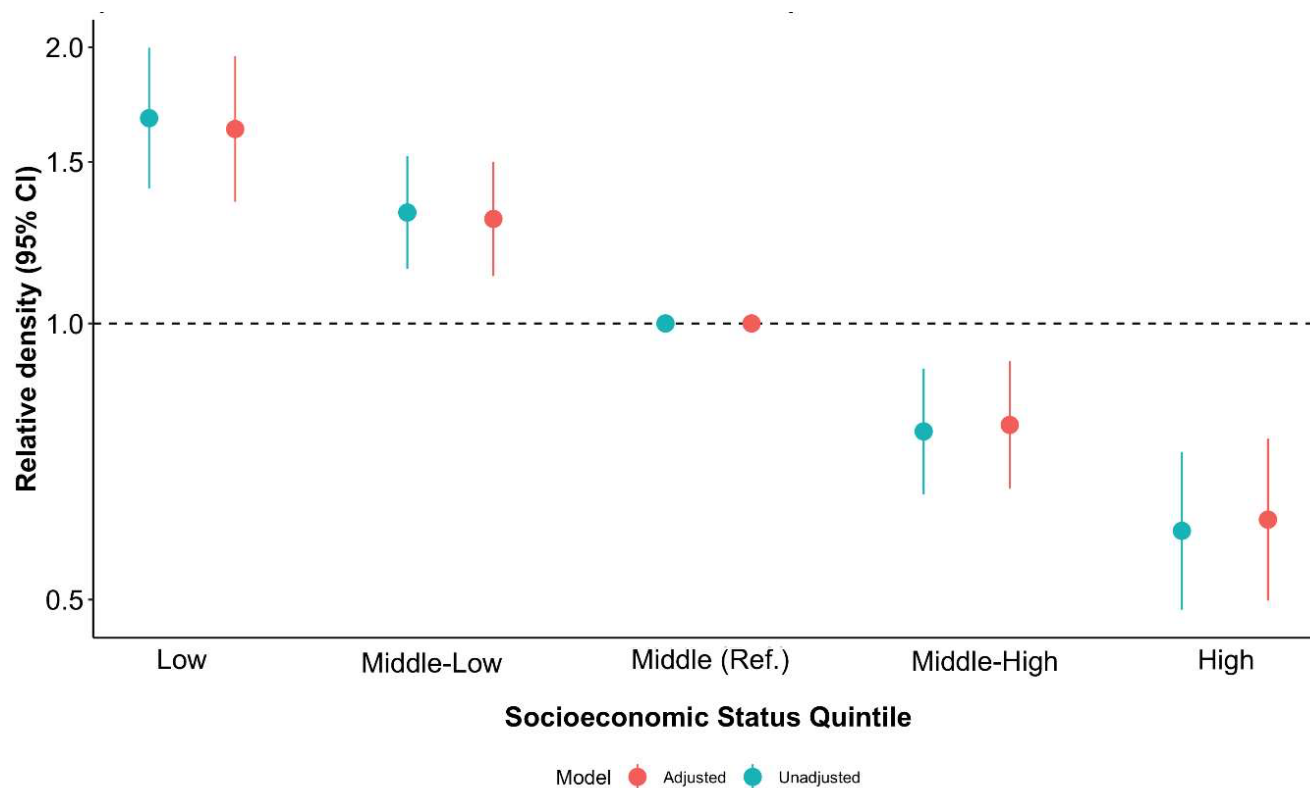


Figure 2. Multilevel negative binomial regression modelling neighborhood-level socioeconomic status with counts of unhealthy outlets around schools in Madrid (2017) before and after adjusting for population density.



La oferta de comida basura es mucho mayor junto a los colegios de barrios desfavorecidos

Un estudio pionero en el sur de Europa muestra que el 95% los escolares madrileños están expuestos a malos alimentos en la misma puerta del centro educativo



JAVIER SALAS

7 JUL 2019 - 00:08 CEST



Escolares en la puerta de un colegio madrileño. LUIS SEVILLANO

El número de tiendas de este tipo alrededor de las escuelas en barrios desfavorecidos es hasta un 62% mayor que las de los barrios medios



Entorno urbano y alimentación: Heart Healthy Hoods en Madrid



1. Pensemos en nuestras ciudades
2. Sistemas alimentarios y entorno urbano
3. Proyecto ERC **Heart Healthy Hoods**: Entorno alimentario en Madrid, dieta y salud cardiovascular
- 4. Photovoice Villaverde: Un proyecto participativo sobre el entorno alimentario y la dieta**



PHOTOVOICE VILLAVERDE PROJECT



A Participatory Action Research project to study and improve the food environment in Madrid



Manuel Franco MD, PhD

Associate Professor

School of Medicine, University of Alcalá, Spain

Adjunct Associate Professor

Department of Epidemiology

Johns Hopkins Bloomberg School of Public Health



- Metodología fotovoz permite a los participantes identificar y hacer un diagnóstico crítico de un determinado problema de salud pública
- Refleja las preocupaciones y posibles soluciones que los participantes dan a ese problema utilizando la fotografía y discusiones grupales
- Una visión profunda de la vida cotidiana de los residentes de una ciudad
- Fotovoz HHH sobre entorno urbano: alimentario, actividad física y alcohol





● Ángel Frías



● Amador Silebo



● Daniel Rafael Mato



● José Luis Carrero



● Christine Funrock



● Esther Ortiz



● Juani Moreno



● Mercedes Bellot



● Isabel Masa



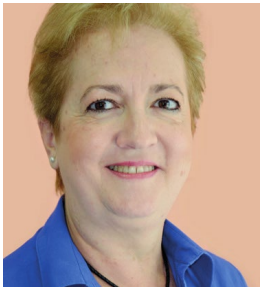
● M^a Soledad Olivo



● Mercedes Rivera



● Zakia El Khamlichi



● Beatriz Criado



● Juana Carulli



● Sagrario Gómez



● Encarnación Franco



● Rosa Arana



● Encarna Dopido





1. Diez J, Health and Place, 2017
 - Free- downloadable Photobook:
hhhproject.eu/photovoice
2. Diez J, Public Health Nutrition, 2017
3. Budig K and Diez J, BMC Public Health 2018
4. Gullón P and Diez J, IJERPH 2018



- Participants took 163 photographs, and identified 30 categories emerging from the photographs and discussions.
- Final categories were then organized around *five themes of the food environment related to dietary behaviors* :



1. Eating in moderation
2. Cultural diversity
3. Food stores
4. Social relationships
5. Economic crisis and poverty

RESEARCH ARTICLE

Open Access



Photovoice and empowerment: evaluating the transformative potential of a participatory action research project

Kirsten Budig^{1†}, Julia Diez^{1†}, Paloma Conde¹, Marta Sastre², Mariano Hernán^{3,4} and Manuel Franco^{1,5*} 



Fig. 1 Female participants of the Photovoice project conducted in the District of Villaverde, Madrid (Spain), 2016



Fig. 2 Public presentation of the photographic exhibition of the Photovoice project, Madrid, 2017. Participants chose the final photographs they wanted to be included in the photographic exhibition and were involved in all dissemination activities



Estudio Heart Healthy Hoods



1. Starting Grant Consejo Europeo Investigación
2. Interdisciplinaridad
3. Métodos Mixtos
4. Participación ciudadana: Metodología Fotovoz
5. **Acción: Comunicación de la evidencia científica y traslación de la evidencia a políticas e intervenciones**



Translating urban health research into policy and practice



De la evidencia a la acción

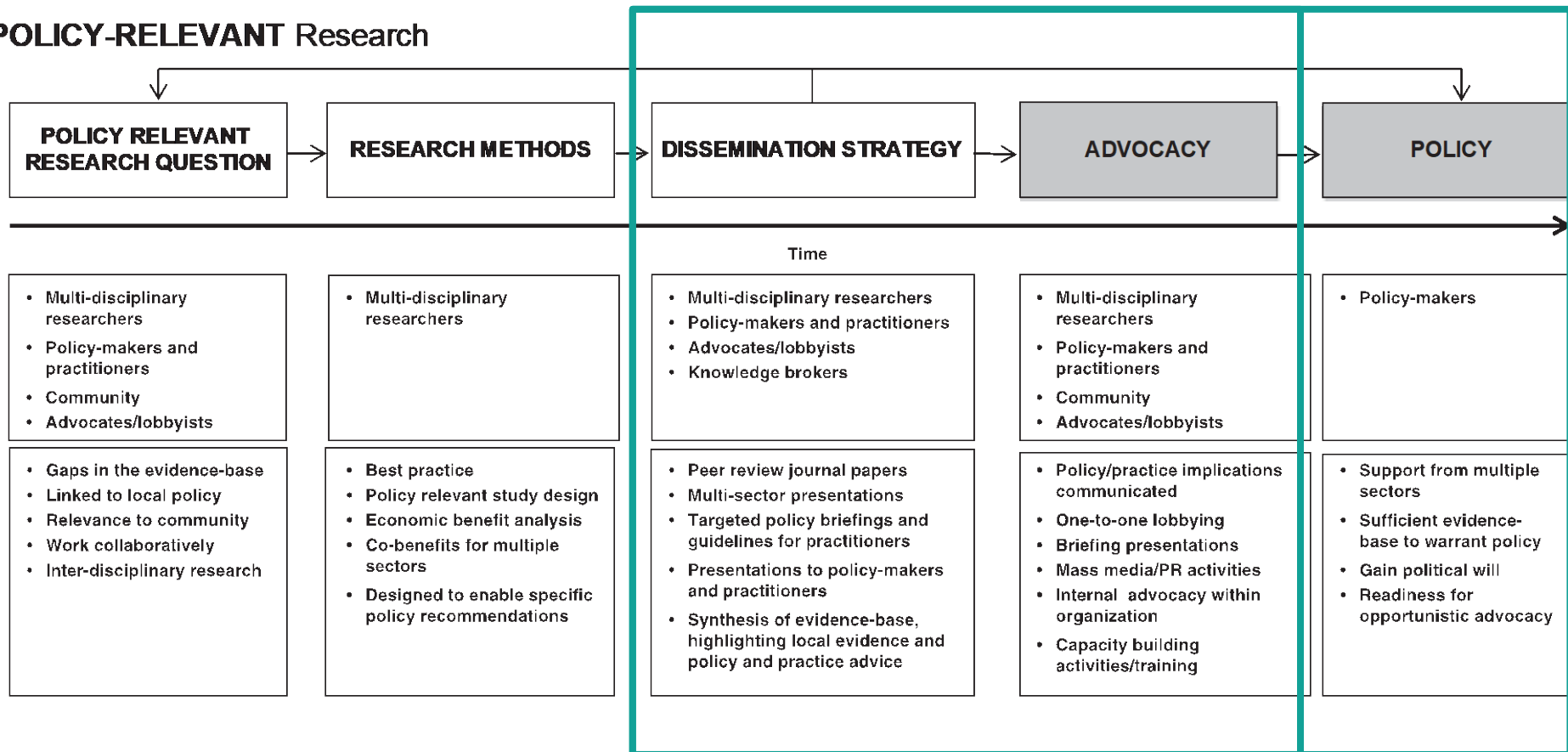
NON-POLICY-RELEVANT Research



Gilles-Corti et al. Journal of Public Health Policy 2015 Vol. 36, 2, 231–243



POLICY-RELEVANT Research



Gilles-Corti et al. Journal of Public Health Policy 2015 Vol. 36, 2, 231–243



Acción: Comunicación

Resultados Fotovoz Villaverde



- Residents participated in dissemination and communication strategies to promote social action:
 - Photobook
 - Exhibition
 - Video
 - Citizen Science meetings
 - Interactive Cartography
 - Media collaboration





Acción: Comunicación

Resultados Fotovoz Villaverde



- Free- downloadable Photobook: hhhproject.eu/photovoice





Traslación de la evidencia científica a políticas e intervenciones



- Two citizen science meetings. Participants presented results and policy recommendations to local policymakers





Acción: Comunicación

Photovoice Villaverde videos



HHH: <https://youtu.be/VliFggKzVas>

ERC: <https://youtu.be/mGGIDtAeZZY>





HEART HEALTHY HOODS

www.hhhproject.eu



European Research Council

Established by the European Commission

Supporting top researchers
from anywhere in the world

A CITIZEN SCIENCE APPROACH FOR FOOD IN THE CITIES, THE HEART HEALTHY HOODS ERC PROJECT: EXHIBITION AT THE EUROPEAN PARLIAMENT

European Parliament will host from May 2nd through May 10th an exhibition on this project

The exhibition, which has the impulse of MEP Estefanía Torres, will be visible at the

Mezzanine YEHUDI MENUHIN, PHS building 1st Floor, European Parliament

Official public opening Thursday 4th at noon, registration at 11:30 am



Communicating photovoice results European Parliament May 4th 2017





HHH Urban food environment results

European Commission Oct 16th. 2017



European
Commission

'Harnessing Research & Innovation
for FOOD 2030:
A Science Policy Dialogue'



Abstract:

This one day conference will serve to disseminate successful European Research and Innovation (R&I) initiatives and contribute to the ongoing science-policy dialogue in the area of Food Nutrition and Security (FNS).





Agradecimientos



- HHH participants
- HHH Madrid team and collaborators
- Funding agencies:
 - **European Research Council**
 - Ayuntamiento y Comunidad de Madrid
 - Fondo de Investigación Sanitaria
 - Plan Nacional de Investigación
 - Plan Nacional Sobre Drogas
 - Fundación Mapfre
 - Center for a Livable Future, Johns Hopkins



¡Muchas Gracias!





HEART HEALTHY HOODS



Gracias!

@mfranco_uah

@HHHproject



Manuel Franco MD, PhD

Associate Professor

School of Medicine, University of Alcalá, Spain

Adjunct Associate Professor

Department of Epidemiology

Johns Hopkins Bloomberg School of Public Health, Baltimore